

Calculate quantities

1 Match the calculations to the bar models.

Work out the missing quantities.

$\frac{1}{4}$ of $\boxed{20} = 5$
 $\frac{1}{4}$ of $\boxed{16} = 4$
 $\frac{1}{5}$ of $\boxed{25} = 5$
 $\frac{1}{3}$ of $\boxed{12} = 4$

Blue lines connect the calculations to the bar models:

- $\frac{1}{4}$ of 20 = 5 connects to Model 1.
- $\frac{1}{4}$ of 16 = 4 connects to Model 2.
- $\frac{1}{5}$ of 25 = 5 connects to Model 3.
- $\frac{1}{3}$ of 12 = 4 connects to Model 4.

2 Complete the sentences.

a) When one fifth is 1, the whole is $\boxed{5}$

When one fifth is 10, the whole is $\boxed{50}$

When one fifth is 20, the whole is $\boxed{100}$

b) When $\frac{1}{7}$ is 2, the whole is $\boxed{14}$

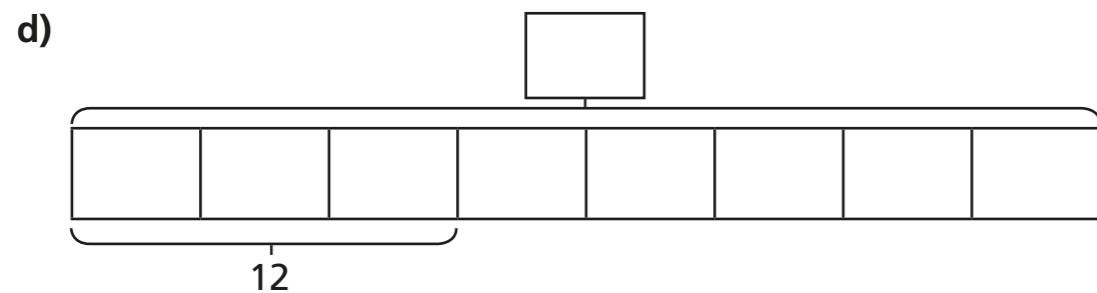
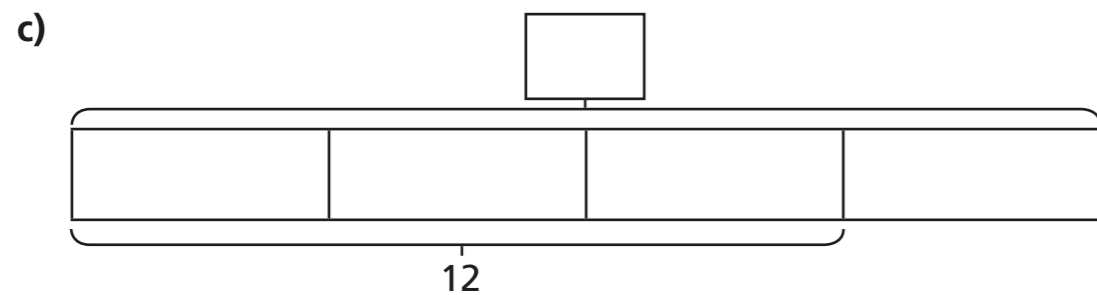
When $\frac{1}{7}$ is 4, the whole is $\boxed{28}$

When $\frac{1}{7}$ is 8, the whole is $\boxed{56}$

3 Complete the bar models and fill in the whole.

a)

b)



4 Complete the calculations.

a) $\frac{1}{2}$ of = 30

e) $\frac{3}{7}$ of = 15

b) $\frac{1}{2}$ of = 15

f) $\frac{5}{7}$ of = 15

c) $\frac{1}{4}$ of = 15

g) $\frac{5}{7}$ of = 35

d) $\frac{3}{4}$ of = 15

h) $\frac{7}{5}$ of = 35

5 Dora and Mo have a full bottle of juice.

Dora drinks $\frac{2}{5}$ of the juice.

Mo drinks $\frac{1}{5}$ of the juice.

There is 150 ml of juice left in the bottle.

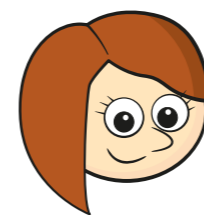
How much juice was in the full bottle?

ml

6 Rosie and Ron are collecting red and blue counters.

They have the same number of blue counters.

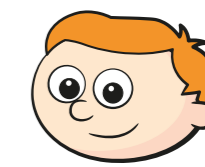
They have a different number of red counters.



Rosie

I have 18 counters altogether. $\frac{2}{3}$ are blue.

$\frac{3}{4}$ of my counters are blue.



Ron

a) How many counters does Ron have altogether?

b) How many red counters do they each have?

Rosie has red counters.

Ron has red counters.